



**Crown Infrastructure
Delivery**

October 2023

Parakiore Recreation and Sport Centre



We wanted to let you know that we have recently received an increased claim from CPB, the Main Works contractor on Parakiore Recreation and Sport Centre, for \$439.4m.

The claim would see the project's contract value increase to \$696m, and the construction completion date shift to May 2025.

We continue to reject the excessive and unsubstantiated claim on both entitlement and amount.

CPB's claim relates to a range of issues including COVID-19 and associated delays, design and adverse ground conditions, and other sundry claims, including allegations that Rau Paenga has not provided acceptable building design documentation. Rau Paenga has confidence in the quality of its design. The facility is already over 70% complete, for which CPB has been paid around \$220m to date, which includes some COVID related claims.

As you will be aware, CPB had already lodged a claim in September 2022 for an additional \$212m, which it increased to \$439.4m at the start of September 2023.

The Rau Paenga team knows all too well what Parakiore will bring to Christchurch. We have families and friends as eager as anyone to ride those hydrosleds and play on the courts, but we also have a duty to be responsible with Crown funds.

We have and will continue to do all we can to get construction of Parakiore completed as close to the end of 2024 as possible but acknowledge this will be challenging given CPB's current stance.

While we would like to find a reasonable commercial resolution to this matter, Rau Paenga has already successfully taken legal action to prevent CPB from suspending construction works on site based on its unsubstantiated claims. As the legal action continues, we are limited in what else we can say at this time.

We will update you with further information at the earliest opportunity.

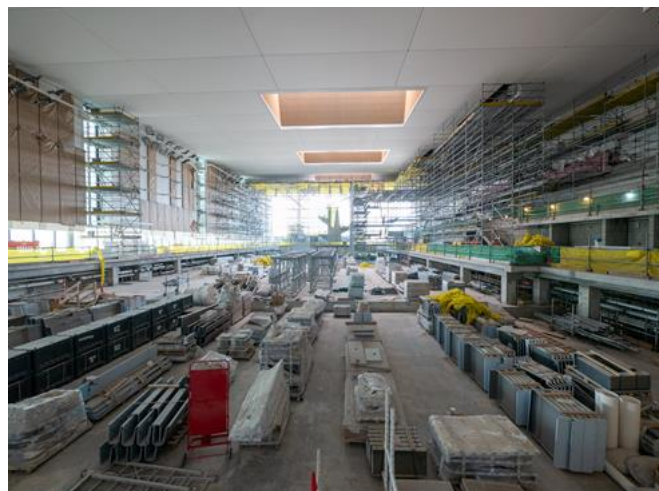
Work continues

Throughout this time work has continued on site.

Most noticeably, much of the steel work has been installed at the southern end of the pools building

for the final section of the façade to be constructed.

You can see a gap in the steel work where the stairs for the dive tower will be lifted in through.



A big change inside the pools building has been the removal of much of the birdcage scaffolding that has been used to install the fabric ceiling over the 50m pool .

With the scaffolding gone, you get a real sense of how large this space is.

Landscaping

On Moorhouse Ave, the kerb has been placed to form the main car park. The light poles have also been installed. A base course has been laid ahead of the final layer of asphalt going down this week.



Expertise

Projects

Careers

[Preferences](#) | [Unsubscribe](#)